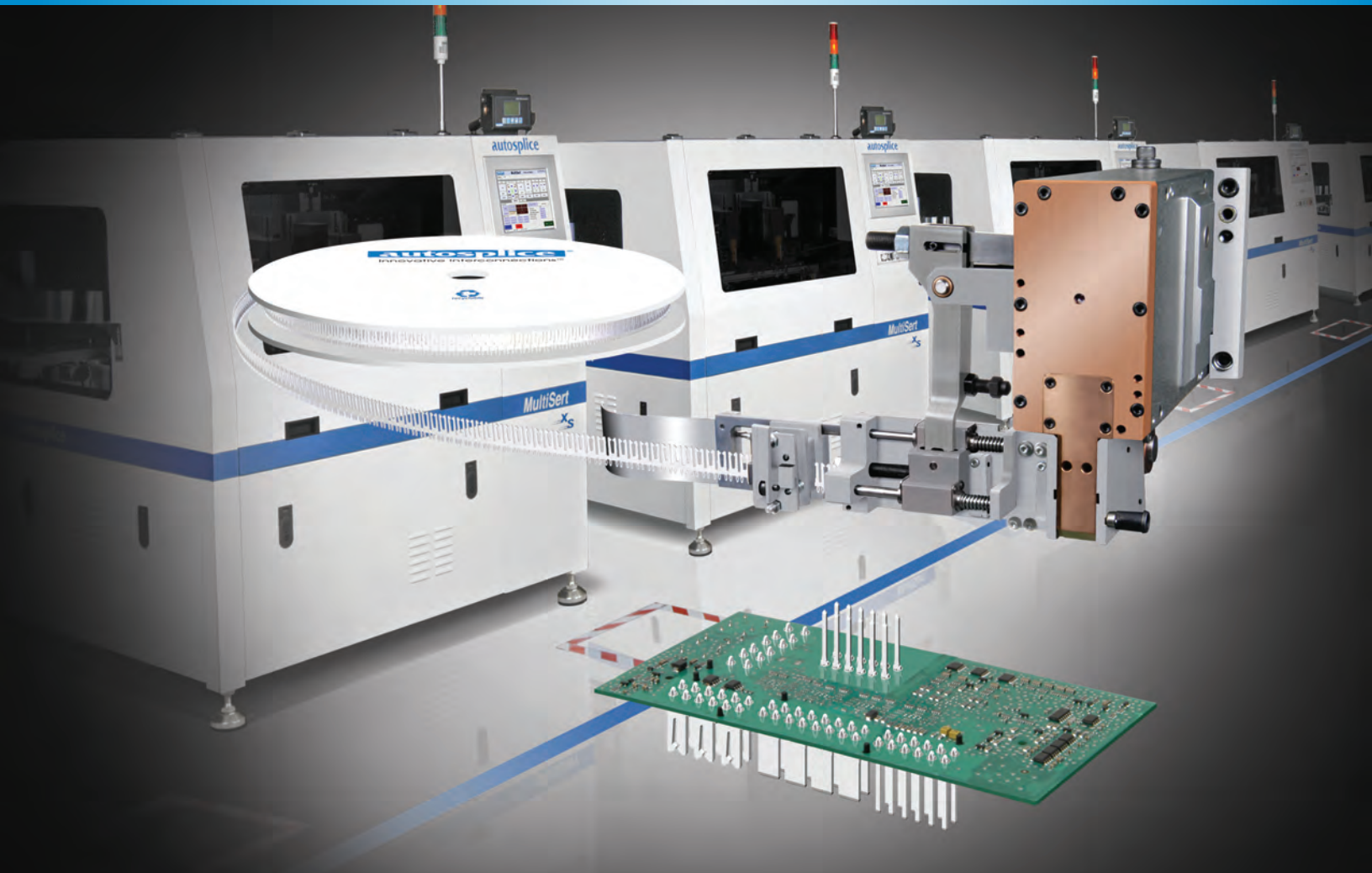


# Flexible Insertion Systems

## For Press Fit And Solderless Interconnects



*Inspired Global Solutions™*

bulletin #0910fis

**autosplICE**®

Innovative Interconnections™

# Multisert<sup>XS</sup> Flexible Insertion System



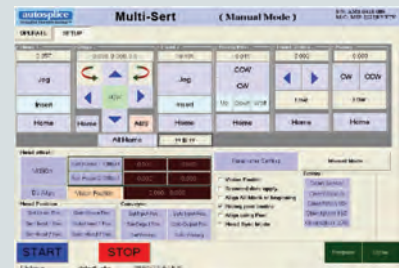
## STANDARD FEATURES

- Insertion rates up to 3 per second on .2" (5.08mm) pitch
- Up to two insertion heads
- High speed servo drives actuate:
  1. X-Y positioning table
  2. Insertion heads
  3. PCB anvil support
  4. Rotary table
  5. Automatic head changer
- 18" x 18" Insertion area (457mm x 457mm)
- Vision system for PCB error correction
- PCB anvil support
- Touch screen monitor
- Windows operating system
- SMEMA interface
- Interlocked enclosure with light curtain
- Optional insertion force monitoring
- Component end of reel sensors
- Optional continuity sensor
- Inserts solid press fit and solderless (compliant) components

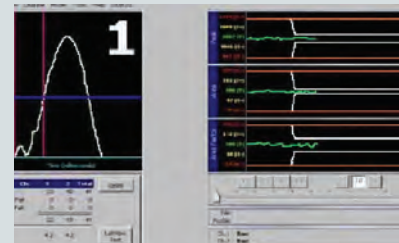
**Multisert<sup>XS</sup>** is the culmination of over 50 years experience, servicing the Automotive, Telecommunications, Medical and Industrial market needs for applied interconnects.

**Servo Power:** Multisert<sup>XS</sup> is fully powered via servo motors, resulting in high speed, precision component placement and maximized output.

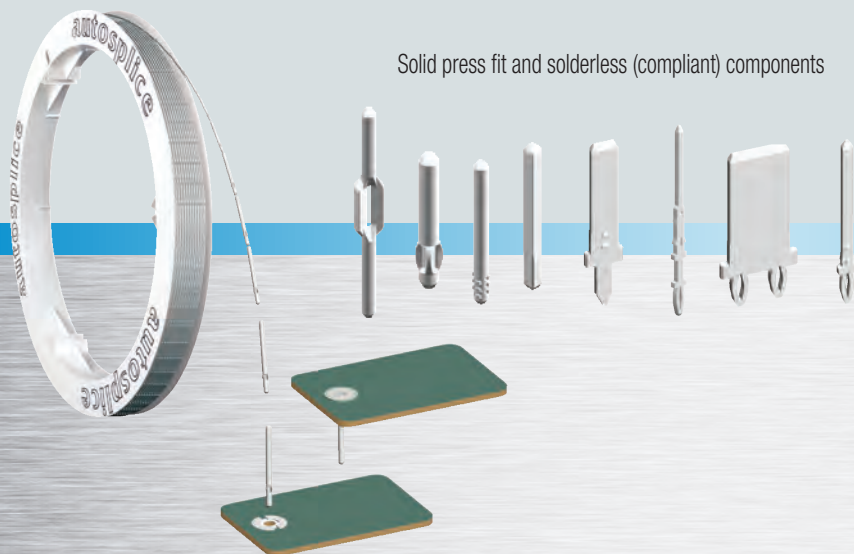
**Vision System:** Multisert<sup>XS</sup> comes complete with our standard vision system that detects and corrects board error and skew. Additionally, a scan-all function allows for complete sequencing through the entire program to verify and correct all programmed insertion locations.



Touch screen monitor with user friendly Windows operating system



Real time Insertion Force Monitoring



Solid press fit and solderless (compliant) components

## SYSTEM OPTIONS

- Programmable rotary stage (0-360 degrees)
- Real time insertion force monitoring
- Top or bottom view bar code scanners
- CE Conformity

# Minisert<sup>XE</sup> Flexible Insertion System

## STANDARD FEATURES

- Insertion rate up to 12,000 per hour on 0.2" (5.08mm) pitch
- 12" X 12" Insertion area
- Hi speed servo drive technology
- Vision system for PCB error correction
- Single head platform
- Component end of reel sensors
- Touch screen monitor
- Windows operating system
- Safety enclosure with light curtain
- Inserts solid press fit and solderless (compliant) components



Solid press fit and solderless (compliant) components

**Minisert<sup>XE</sup>** is a cost-effective high-speed insertion system designed for smaller foot-print applications. This single head stand-alone platform, comes complete with a 12" X 12" insertion envelope, and servo drive head actuation.

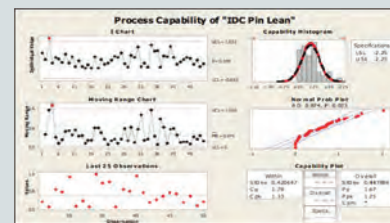
**Servo Power:** Minisert<sup>XE</sup> is fully powered via DC servo motors, resulting in high-speed precision component placement and maximized output.

**Vision System:** Minisert<sup>XS</sup> comes complete with our standard vision system that detects and corrects board error and skew. Additionally, a scan-all function allows for complete sequencing through the entire program to verify and correct all programmed insertion locations.

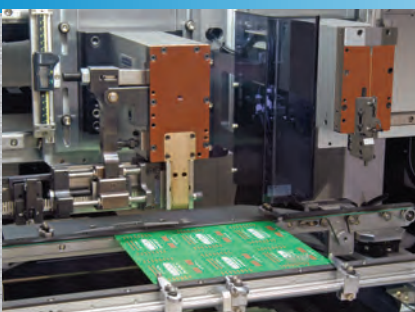
**Design:** Engineered and manufactured to internationally recognized quality standards ISO/TS16949-2002.



Touch screen monitor with user friendly Windows operating system

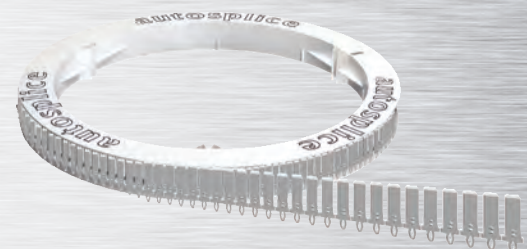


Capability tested to the highest industry standards



Modular insertion heads for quick tooling & application changeover.

Vision system for board error correction.



# Compact Mini, MiniPin And Feeders

## Compact Mini Insertion System

### STANDARD FEATURES

- Insertion rate up to 5,000 per hour on 0.2" (5.08mm) pitch
- 11.5" X 11.5" Insertion area (292mm x 92mm)
- Hi speed servo drive technology
- Single head platform
- Touch screen interface
- Windows Operating System
- Modular Insertion Heads
- Bench top compact design



**Compact Mini<sup>XB</sup>** is a cost-effective, bench top insertion system designed for smaller foot-print applications. This single head stand-alone platform, comes complete with a 11.5" X 11.5" insertion area and servo drive head actuation.

## MiniPin Insertion System

### FEATURES and BENEFITS

- Insertion rates up to 3,000/hour
- Pin sizes from .020" to .045" (5.08-1.14mm)
- Lightweight, mobile only 44Lbs (20Kg.)
- Pin lengths from .200" – 1.00" Long (5.080- 25.4mm)

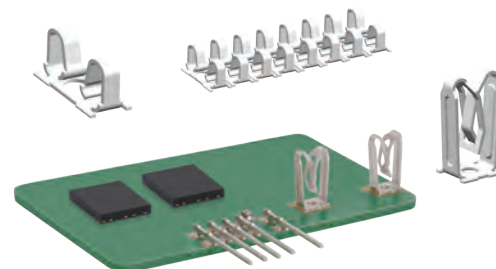
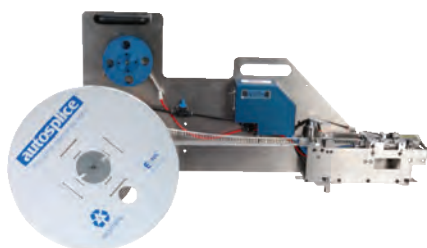


**MiniPin** is a cost effective bench top pin insertion system designed for medium to low volume applications. Ideal for repair stations, MiniPin is both mobile and flexible. Quick tooling changeover (5 parts max.) allows for maximum application flexibility and utilization. MiniPin feeds, cuts and inserts Autossplice continuous reeled pins, at a rate of 3,000 insertions/hour.

## Feeders For Continuous Reeled Stamped Components

### COMPATIBLE WITH

- FUJI IP-2, IP-3
- UNIVERSAL – GSM
- PANASONIC MSF
- SANYO TIM 5100
- SIEMENS HF3, HF4 & HF5
- OTHER SYSTEMS AVAILABLE



## Autossplice Worldwide



Autossplice, Inc.  
10121 Barnes Canyon Road  
San Diego, CA 92121  
USA  
Tel: (858) 535-0077  
E-mail: sales@autossplice.com



Autossplice Mexico, S. de R.L. de C.V.  
Cartagena 18960 Plant 1 & 2  
El Ponvenir, Tijuana, BC 22224  
Mexico  
Tel: 52 664 625 8796  
E-mail: sales@autossplice.com



Autossplice Europe GmbH  
Mühlsteig 2,  
D-90579 Langenzenn  
Germany  
Tel: 49 9101 9014 0  
E-mail: info@autossplice.de



Autossplice Japan  
3-7-39 Minami Cho,  
Higashi Kurume Shi  
Tokyo 203-0031 Japan  
Tel: 81 424 62 8481  
E-mail: info@autossplice.co.jp



Autossplice Asia Pte, Ltd.  
Redhill Industrial Estate  
1002 Jalan Bukit Merah, Unit #05-13,  
Singapore 159456  
Tel: 65 6276 8223  
E-mail: sales@autosspliceasia.com.sg



Autossplice Paramount  
7551 Rosecrans Ave.  
Paramount, CA 90723  
USA  
Tel: (858) 535-0077  
E-mail: sales@autossplice.com



Autossplice Industria E Comercio  
Rua Laguna 79, Jardim Platina  
CEP 06273-140, Osasco  
Sao Paulo, Brazil  
Tel: 55 11 3601 4445  
E-mail: conect@autossplice.com.br



Autossplice Brittanica Ltd.  
Units 1 Crompton Rd. Industrial Estate  
Ilkeston, Derbyshire DE7 4BG  
United Kingdom  
Tel: 44 1159 440 258  
E-mail: info@autossplice.de



Autossplice Korea  
Namdong Industrial Complex  
117 Block 2, Lot 686-13, Gojan-Dong,  
Namdong-Gu, Incheon City, South Korea  
Tel: 82 32 812 9784  
E-mail: info@autossplice.co.kr



Autossplice Electronics (Dongguan) Ltd.  
No. 17 Chuang Xin Road 1,  
Xia Ling Bei Industrial Estate,  
Liao Bu Town, Guang Dong Province, China  
Tel : 0769-83525370  
E-mail: sales@autossplicechina.com

**autossplice**®

Innovative Interconnections™

*Inspired Global Solutions™*

[www.autossplice.com](http://www.autossplice.com)

[insertionsystems@autossplice.com](mailto:insertionsystems@autossplice.com)